

FOR SALE

3.3 AC Development Site

S. Andover Rd & E. Harry Andover, KS

PROPERTY INFORMATION

Purchase Price
\$718,630 (\$5/SF)

Zoning
MXR Multiple Family/
Mixed Residential District

2017 Taxes
\$5,495.34

Total Lot Size
3.3 Acres (143,726 SF)



Potential Uses:

Assisted Livings,
Medical/Dental Clinic,
Multi-Family Residential,
Self-Storage,
...and More!

CONTACT INFORMATION

Carl Hebert, CCIM
(316) 618-1100
cjhebert@insitere.com

EXISTING STRUCTURES

	Parcel 1	Parcel 2	Parcel 3
	2BR 1BA	2BR 1.5 BA	Farm Utility Building and Fencing
Lot Size	34,846 SF	34,846 SF	74,034 SF
Year Built	1975	1957	1975
Building Size	984 SF	1,802 SF	56x36 SF

FOR SALE

PROPERTY INFORMATION

Purchase Price
\$718,630 (\$5/SF)

Zoning
MXR Multiple Family/
Mixed Residential District

2017 Taxes
\$5,495.34

Total Lot Size
3.3 Acres (143,726 SF)

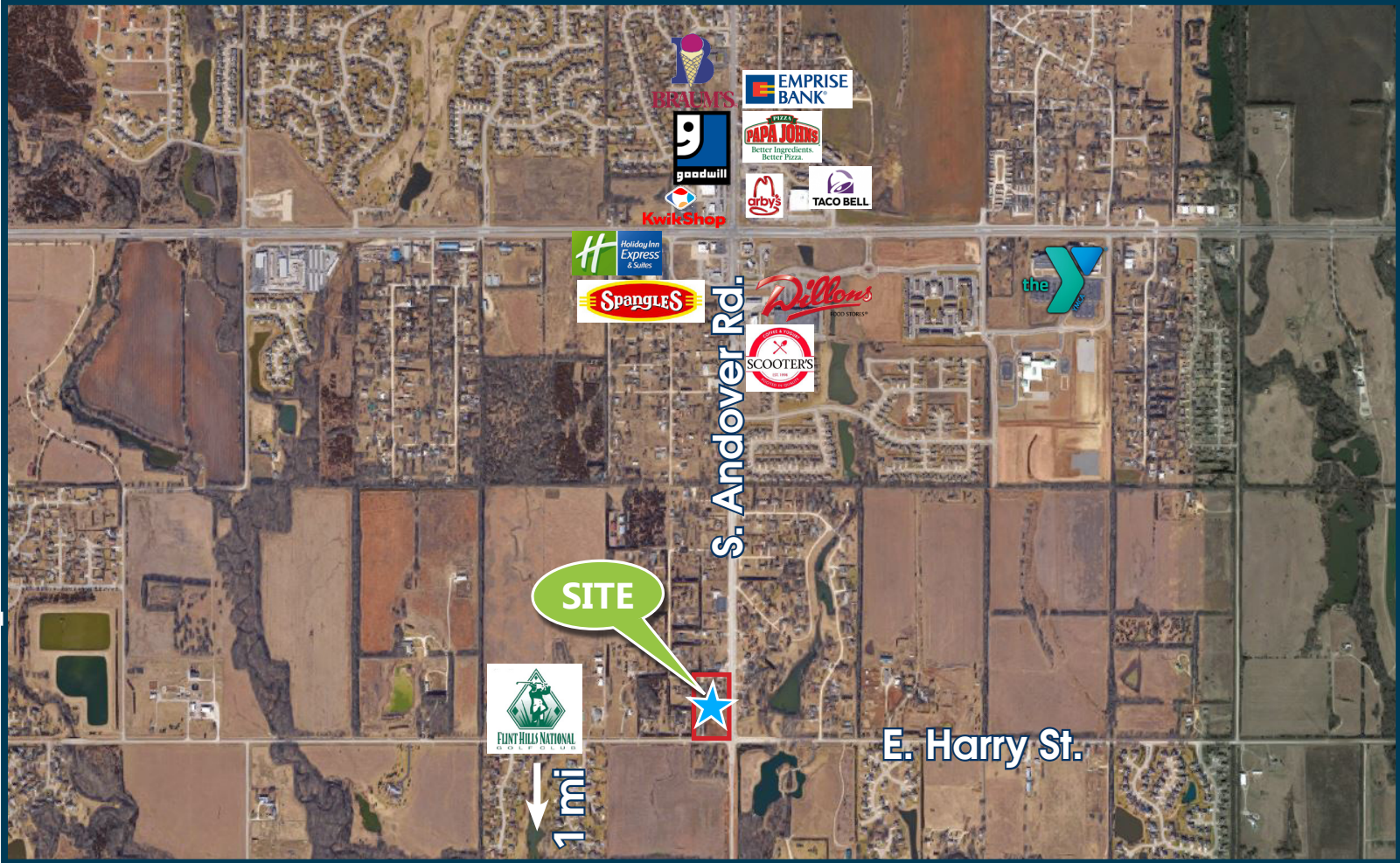
CONTACT INFORMATION

Carl Hebert, CCIM
(316) 618-1100
cjhebert@insitere.com



3.3 AC Development Site

S. Andover Rd & E. Harry Andover, KS



- ✓ Utilities to the Site
- ✓ High Traffic & Visibility
- ✓ Hard Corner
- ✓ Potential Rental Income